

D1600V2/D12V2/D16V3 additions and changes

About this document

This leaflet explains the new functions and improvements that will be added when you upgrade to the D1600V2/D12V2.

These explanations follow the corresponding sections in the "D1600 Operation Manual" and "D12 Operation Manual," so please read the manual for your instrument together with this leaflet.

The upgrade from the D16 or D16V2 to the D16V3 will differ in some ways from the explanations here. Please read "Upgrading the D16" (page 5) first.

Conventions in this document

This document uses the same printing conventions as described in "Printing conventions in this manual" on p.7 of the "D1600 Owner's Manual" and "D12 Owner's Manual." The following conventions are also used.

(→D1600; p.?): Indicates a reference page in the "D1600 Owner's Manual"

(→D12; p.?): Indicates a reference page in the "D12 Owner's Manual"

(→D16; p.?): Indicates a reference page in the "D16 Owner's Manual"

(→D16V2; p.?): Indicates a reference page in the "D16V2 Upgrade Guide"

Upgrading

For details on upgrading, refer to the section of your operating manual entitled "Updating the system software" (→D1600; p.139, D12; p.135).

Additions and changes

8X writing to CD-R/RW

Now you can use a CD-R/RW 8X drive sold by Korg (CD-RW-1/CD-RW-2) to write to CD-R/RW media at 8X speed. This can be used to create audio CD's, exporting WAV files, or backing up songs.

* You must use CD-R/RW media that supports 8X writing.

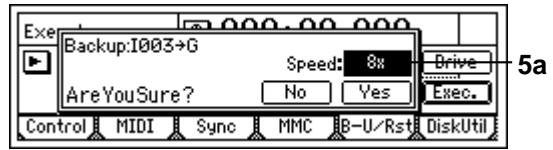
8X writing for CD backup

Now you can use 8X and 6X writing speeds when backing up to CD-R/RW.

Add to the SYSTEM: "B-U/Rst" tab page(→D1600, D12; p.78)

5. Exec.
Execute the backup.

The "Source" song will be backed up to the "Destination" drive. The effect user data will also be backed up at this time.



5a. Speed[1x, 2x, 4x, 6x, 8x]

Specify the writing speed for backing up to CD-R/RW.

8x: Write at 8X speed.

6x: Write at 6X speed.

4x: Write at 4X speed.

2x: Write at 2X speed.

1x: Write at 1x speed.

In response to the "Are You Sure?" display, press the "Yes" button to begin the backup.

Note In order to use "8x," you must use a CD-R/RW 8X drive sold by Korg (CD-RW-1/CD-RW-2), and media that supports 8X writing. Depending on your system (e.g., your hard disk and CD-R/RW drive), you may not be successful in backing up at 4X or higher speeds. If this occurs, use the "2x" setting.

Note It is not possible to select a writing speed that is not supported by your drive.

Note You can select only up to 4X for an external SCSI drive.

note If you press the "Abort" button during the writing process, the writing will be halted, and an incomplete disc will result. If you press the "Abort" button while writing a CD-RW, the data that had already been written will be erased.

Automatic compare function when backing up to CD-R/RW

When backing up to CD-R/RW, the data will automatically be compared, preventing an invalid backup CD from being created.

Create audio CD's consecutively

The image file generated when creating an audio CD is now retained, so that multiple copies of a CD can be written consecutively.

Change for the SONG: "CDR/RW" tab page (→D1600; p.91, D12; p.92)

5. WriteToCD

Write the data to CD-R/RW. When you press the "WriteToCD" button, an "Obey Copyright Rules" message will appear. Carefully read "About copyright" (→D1600, D12; p.1), and use this command only if you consent to the terms of use.

5a. WriteSpeed[1x, 2x, 4x, 6x, 8x]

Specify the speed at which the CD will be written.

8x: Write at 8X speed.

6x: Write at 6X speed.

4x: Write at 4X speed.

2x: Write at 2X speed.

1x: Write at 1x speed.

In response to the "Are You Sure?" message, press the "Yes" button to begin writing.

note The time required to create the temporary image file used when creating an audio CD will not change even if you change the writing speed.

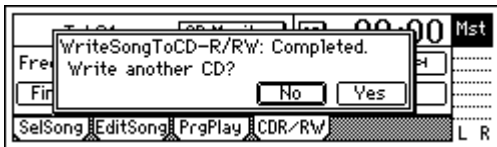
! In order to use "8x," you must use a CD-R/RW 8X drive sold by Korg (CD-RW-1/CD-RW-2), and media that supports 8X writing. Depending on your system (e.g., your hard disk and CD-R/RW drive), you may not be successful in writing at 4X or higher speeds. If this occurs, use the "2x" setting.

! It is not possible to select a writing speed that is not supported by your drive.

! You can select only up to 4X for an external SCSI drive.

note If you press the "Abort" button during the writing process, the writing will be halted, and an incomplete disc will result.

When writing is completed, the following message will appear. If you wish to write the same song to other CD media, press the "Yes" button. If you do not wish to write the same song, press the "No" button.



If you press the "Yes" button, the following message will appear, and the CD will be ejected. Insert other CD media and press the "OK" button.



Export WAV files to CD-R/RW

WAV files can now be exported to CD-R/RW media. The data will be written in ISO 9660 level 1 format.

note The "Time difference from Greenwich Mean Time (GMT)" setting is not supported. Depending on the type of your computer or operating system, the date and time at which the WAV file was modified may not be displayed correctly.

Export multiple WAV files

When exporting WAV files, clipboard data containing two or more tracks can now be exported simultaneously as multiple monaural WAV files.

Change for the TRACK: "Export" tab page (→D1600, D12; p.87)

Audio track data copied to the clipboard can be output as WAV files to an external SCSI device or CD-R/RW drive. When exporting 24-bit mode clipboard data, you can select either 16 bit or 24 bit. If you select 16 bit at this time, you can

also select whether to apply dithering.

note If dithering is applied, quantization noise will be less noticeable.

note When using an external SCSI device (other than the CD-R/RW), FAT16 DOS format is supported. (refer to "Format/DOS")

note When exporting a WAV file to CD-R/RW, ISO 9660 level 1 format is supported.



3. Rename

Press the "Rename" button to access the dialog box, and specify the name of the WAV file. A WAV file name up to 6 characters can be input.

note The 7th and 8th characters of the filename will automatically be input with the following characters, depending on the number of tracks being exported.

MN: When exporting 1 track (monaural file)

ST: When exporting 2 tracks (stereo file)

01: When exporting 4 or more tracks, a number in the range of 01-16 will be added automatically. (monaural files)

5. Option

Make settings for exporting WAV files to CD-R/RW.

* Only if the target drive is CD-R/RW



5a. CD Writing Speed [2x, 4x, 6x, 8x]

Specify the speed at which the CD will be written. (refer to [SONG] "CDR/RW" tab page "Write Speed")

5b. Finalize [On/Off]

Additional WAV files can be exported successively to a CD-R/RW, but if this WAV file will be the last one written, turn this item On.

On some drives such as early CD-ROM drives, the data cannot be read unless the CD has been finalized.

! If there is no more storage space available on the CD-R/RW media, the finalize operation will be executed automatically.

DOS Format and CD-RW Erase added to the "DiskUtil" tab page

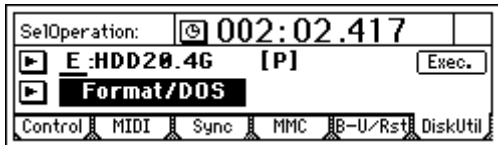
DOS formatting (FAT 16) of an external SCSI device (as required before WAV files can be exported to the external device) can now be performed by the D1600/D12 itself. In addition, the "Erase" button that allows you to erase CD-RW data in the [SONG] "CDR/RW" tab page has also been added to the "DiskUtil" tab page, and you can now select complete erasure/rapid erasure when erasing data.

Add to the SYSTEM: "DiskUtil" tab page
 (→ D1600, D12; p.79)

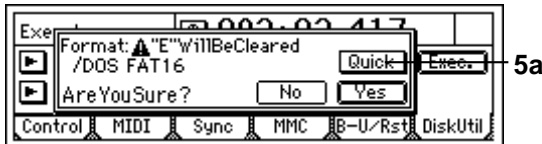
4. SelOperation [EjectRMD, CheckDrive, Initialize, Format, LoadSystem, Format/DOS, EraseCD-RW]

Format/DOS: Execute DOS formatting (FAT) on an external SCSI device.

- ⚠ If you DOS-format a drive that is larger than 4 GB, the capacity will be a maximum of 4 GB.
- ⚠ When you execute "Format/DOS," all data on that drive will be lost.
- ⚠ It is not possible to execute Format/DOS on the drive of the currently selected song.



5. Exec.
 Execute DOS formatting.



5a. Quick SW [On, Off]

Select the DOS format type.

On: Select this if the media has already been physically formatted. Since only the system area need be initialized, this will not require much time.

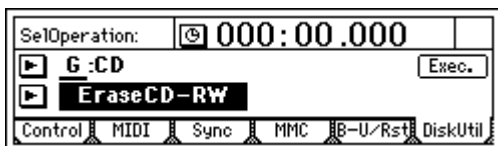
Off: Select this when formatting media that has not been physically formatted.

- ⚠ If "Quick" is turned "Off," a certain amount of time will be required for DOS formatting. Executing Format/DOS on a 100 MB Zip disk with "Quick" turned "Off" will take approximately 10 minutes.

EraseCD-RW:

Data written to CD-RW media will be erased. If the data has been erased in this way, the entire capacity of the disc will be available once again as blank media.

- ⚠ When you execute "EraseCD-RW," all data on that media will be erased.
- ⚠ It is not possible to execute "EraseCD-RW" on a drive other than CD-RW.



5. Exec
 Execute erasure of a CD-RW.



5a. Quick SW [On/Off]

Select how the CD-RW will be erased.

On: High-speed erasure will be performed on the entire CD-RW media. Since only track-information data will be erased, this allows the disc to be erased quickly. This will not affect rewriting. Normally you will select this setting.

Off: The entire CD-RW media will be erased. All the written contents will be lost.

Options added to CheckDrive

The Disk utility "CheckDrive" now allows you to choose from three types: "Full" which checks the entire area, "CurSng" which checks the currently selected song, and "Unused" which checks the area available for further recording.

Change "CheckDrive" in the "DiskUtil" tab page
 ('D1600; p.80, D12; p.79)



5a. Area [Unused, Full, CurSng]

Specify the area that will be checked by the CheckDrive operation.

Unused: Check and repair the 2 GB of unused area that will be used next.

Full: Check and repair the entire area.

CurSng: Check and repair the area used by the currently selected single song.

- ⚠ The CheckDrive command requires a certain amount of time. If the "Area" is set to "Full," approximately the following times will be required (when using the internal hard disk drive).

6.0 GB: approximately 100 minutes

20 GB: approximately 240 minutes

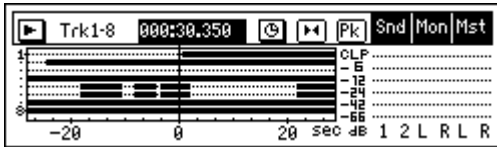
- ⚠ If the "Disk Busy" message appears even after CheckDrive has been executed, you will need to execute the [TRACK] "EditTrk" tab page command "Optimize Track" to optimize the track data.

- ⚠ Sometimes, ultra-low-frequency sounds such as occurring in a studio may cause "DiskBusy" errors.

Change in the Track View display

The Track View display has been changed so that it is always centered on the current time. During playback, audio events will scroll from right to left. Also, a scale change button has been added, allowing a wider range to be displayed.

Change the display screen when "TrkView 1-8," "TrkView9-16," or "TrkView1-16" is selected for "SelectDisplayMode" (→ D1600, D12; p.111)



ScaleChangeSW [(5, 10, 20, 40)]

Change the displayed range for track view. Each time you press the button, the selection will expand or contract in the range of 5 sec – 40 sec. The button is displayed as "◀▶" when expanding and as "▶◀" when contracting.

5 sec: The 5 seconds before and after the current location will be displayed.

10 sec: The 10 seconds before and after the current location will be displayed.

20 sec: The 20 seconds before and after the current location will be displayed.

40 sec: The 40 seconds before and after the current location will be displayed.

The following items have been changed to improve operability

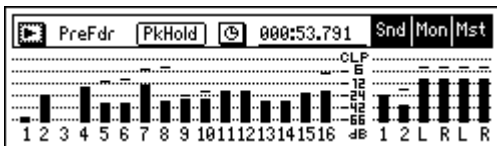
— Restart button has been added

A Restart button has been added, giving you the option of restarting when turning the power off. This lets you clear the Undo data to recover hard disk space, or to re-scan the SCSI devices.



— Multi-step level meters

The level meters are displayed more smoothly than before.



— Change in counter display specifications for the waveform screen

When using the tempo track, if the counter is set to measure display (MBT), it will automatically be changed to time display (MSM) in the waveform screen. This allows you to scrub the waveform smoothly.

— Faster locate time for long recording data

Internal sound processing has been optimized, allowing smoother locate operations for songs with long recording times.

— Faster processing when a WAV file is previewed a second time

The file will not be reloaded when you preview a WAV file that you have already previewed, allowing you to preview it immediately.

— No change in monitor bus settings when you change songs

The monitor bus settings will no longer be initialized when you change songs. This allows settings such as rhythm click monitoring to be used for other songs as well.

— Note regarding Playback when creating an audio CD

In order to support the new CD-R/RW drive option, the ability to play an un-finalized CD has been eliminated.

— "DiskChanged" display has been eliminated

A warning message of "DiscChanged" will no longer appear when you exchange disks while performing CD-related operations. This allows you to proceed without interruption.

— Changes in the Rename screen

The locations of the alphabet button and numeral button have been exchanged, allowing you to select the alphabet button and the "▶" button simply by up/down cursor operations. This improves operability on the D12.



— Change in cursor movement in the waveform screen

The way in which the cursor moves in the up/down direction has been changed. When the cursor is at the locate counter, you can now use up/down cursor operations to select the time axis expand/contract button. This improves operability on the D12.

Upgrading the D16

When the D16V2 is upgraded to the D16V3, the following additions and changes will occur in addition to those explained above.

If you are upgrading from the D16, so please read “D16V2 Upgrade Guide” as well, since the D16V3 upgrade includes the contents of the D16V2 upgrade.

— Larger waveform screen

The waveform display area in waveform screens (Scrub, EditTrk, AutoPunch, Loop) has been increased, allowing you to edit the waveform more visually. The waveform zoom-in/out buttons now allow you to view the waveform in finer detail, down to the level of an individual sample.

— 4x writing when creating an audio CD

— 4x writing when backing up to CD

When using an external CD-R/RW drive to create an audio CD or backup, you can now use 4x writing. For details refer to “D1600/D12 additions and changes.” However, since the D16 and D16V2 can use only external SCSI-connected CD-R/RW drives, only up to 4x speed is supported.

* Your drive and media must support 4x writing speed.

— Additional error messages

The following error messages have been added.

Can't Play CD

- Could not play an audio CD.
- If the CD has not been finalized, finalize the CD before playing it.
- If the CD has been finalized, check the connections of the drive. If there are no problems with the connections or operation, try another disc.

Disc Full

- When writing an audio CD, there was insufficient space on the CD.
- Write to new CD media.

Track Full

- When writing an audio CD, the number of tracks (the number of songs) written to the CD has exceeded 99 songs.
- Write to new CD media.

Write CD Failed

- Writing to CD has failed.
- Select a slower speed for writing to the CD-R/RW.
- Use the media recommended for your drive.
- If you are attempting to write to CD from an external SCSI device, the transmission speed may be insufficient.
- You may be able to write successfully if you copy the data from the external SCSI device to the internal hard disk, and then write it from the internal hard disk to the CD.
- Read the “CD-RW” section of “Troubleshooting.”

Obey Copyright Rules

- When using digital input or when creating an audio CD, carefully read the following paragraph “About copyright,” and be sure to observe copyright laws.

COPYRIGHT WARNING

This professional device is intended only for use with works for which you yourself own the copyright, for which you have received permission from the copyright holder to publicly perform, record, broadcast, sell, and duplicate, or in connection with activities which constitute “fair use” under copyright law. If you are not the copyright holder, have not received permission from the copyright holder, or have not engaged in fair use of the works, you may be violating copyright law, and may be liable for damages and penalties. If you are unsure about your rights to a work, please consult a copyright attorney. KORG TAKES NO RESPONSIBILITY FOR ANY INFRINGEMENT COMMITTED THROUGH USE OF KORG PRODUCTS.